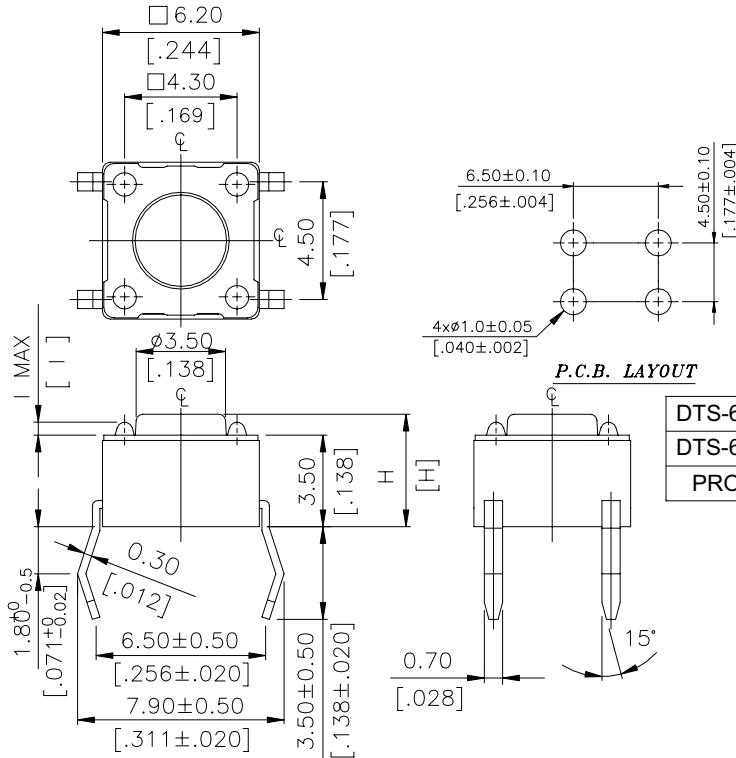


DTS-6.2 SERIES

DIMENSIONS

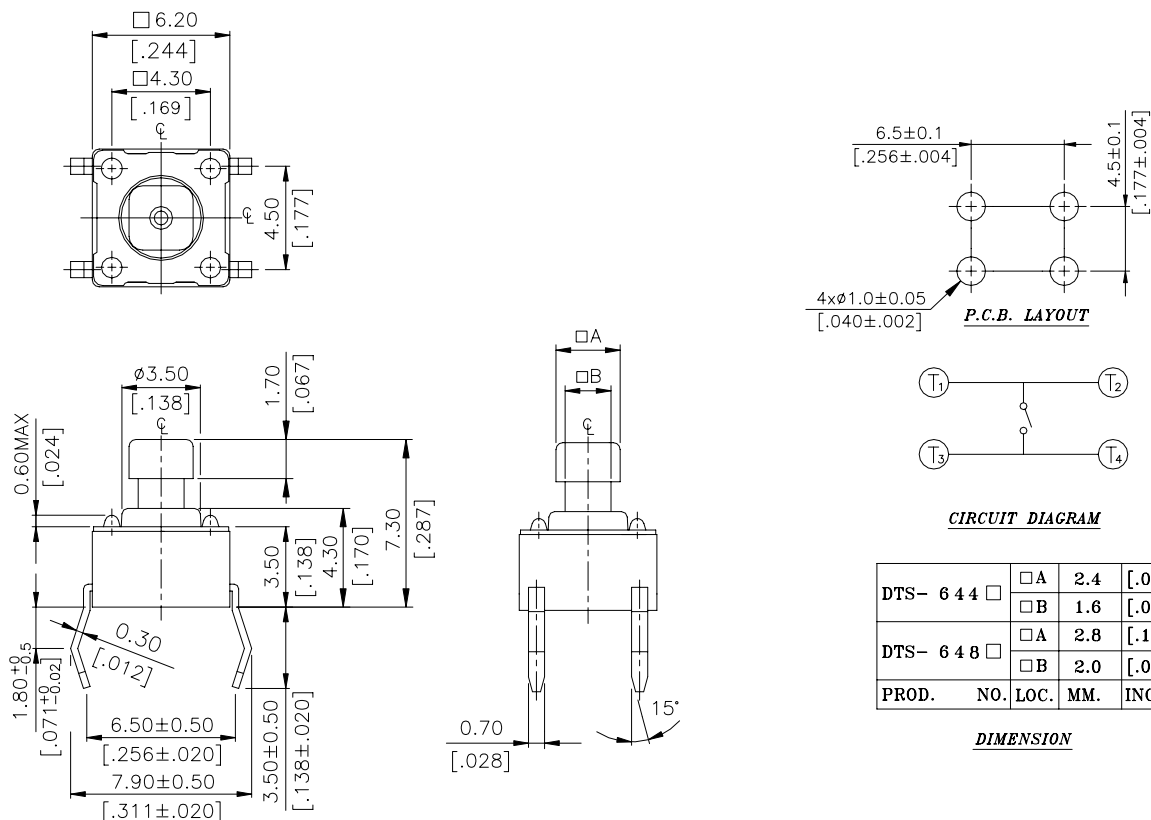
DTS-61~66



DTS-62~66	0.6 MAX	.0236 MAX
DTS-61	0.5 MAX	.0197 MAX
PROD. NO.	I	INCHES.

DTS- 6 6	13.0	[.512]
DTS- 6 5	9.5	[.374]
DTS- 6 3	7.0	[.275]
DTS- 6 2	5.0	[.197]
DTS- 6 1	4.3	[.169]
PROD. NO.	H	

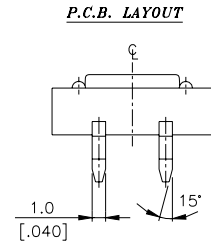
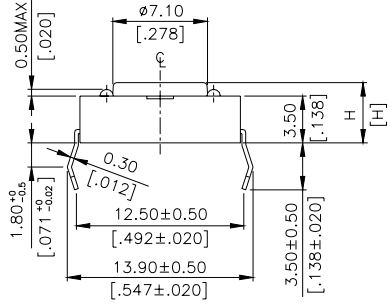
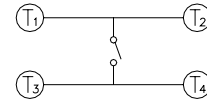
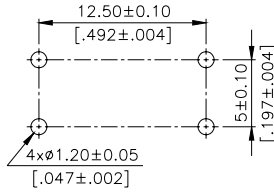
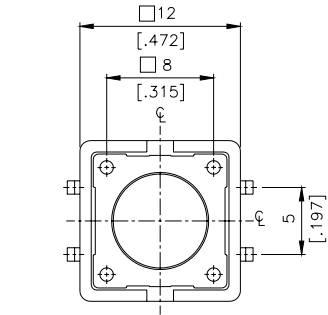
DTS-644 - 648



DTS- 6 4 4	□A	2.4	[.095]
	□B	1.6	[.063]
DTS- 6 4 8	□A	2.8	[.110]
	□B	2.0	[.079]
PROD. NO.	LOC.	MM.	INCH.

DIMENSION

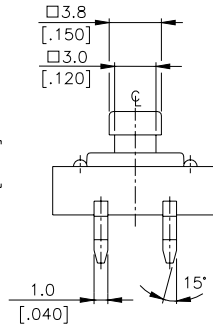
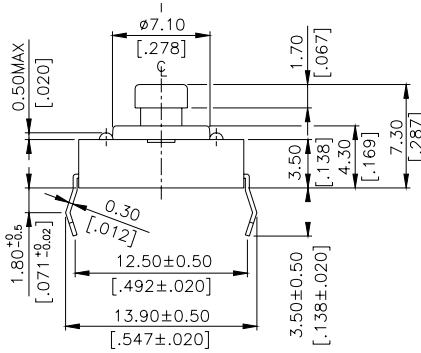
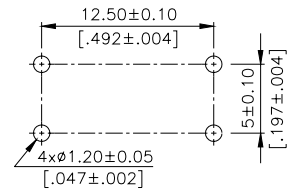
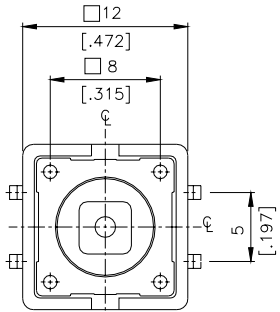
DTS-21、25



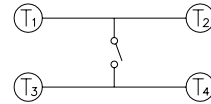
CIRCUIT DIAGRAM

DTS-25	8.5	[.335]
DTS-21	4.3	[.169]
PROD. NO.	H	
附表 A		

DTS-24

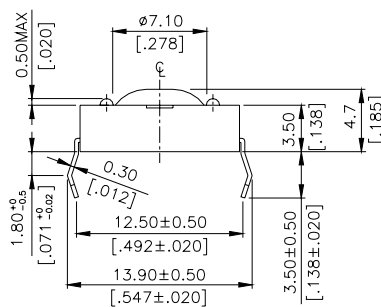
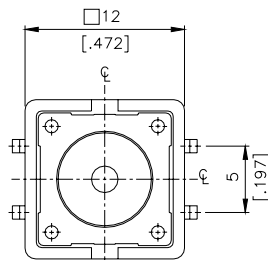


P.C.B. LAYOUT



CIRCUIT DIAGRAM

DTS-21(063)



HOW TO ORDER

D T S □ - □ □ □ - □ - □ (□□□)

(063) =Silicon Rubber Actuator
 { DTS-21 Only }
 (231) =Total H : 6.0mm (DTS-6)
 (083) =Total H : 12.6mm (DTS-6)

Package style:

□ = Bulk pack
 ▲ B = Tube
 (▲ Except DTS-63, 644,648,65,66)

Soldering:

V = Lead Free Solderable

Color of stem for operating force:

▲ K = Black , 100gf
 N = Brown , 160gf
 R = Red , 260gf
 S = Salmon , 320gf
 ▲ Y =Yellow , 520gf
 (▲ 12x12 K、Y Unavailable)

Dimension H :

◎ 6 X 6 mm	◎ 12 x 12 mm
1 = 4.3 mm	1 = 4.3 mm
2 = 5.0 mm	4 = 7.3 mm (SQ.) x 3.8 mm
3 = 7.0 mm	5 = 8.5 mm
44 = 7.3 mm(SQ.)x2.4 mm	
48 = 7.3 mm(SQ.)x2.8 mm	
5 = 9.51 mm	
6 = 13 mm	

Prod. Size :

6= 6x6 mm
 2= 12x12 mm
 □ = None Post
 ▲ =With Post
 <▲ Only For 12x12>
 Tactile Switch

SPECIFICATION

△MECHANICAL

Operation Force:520±130gf Yellow(Y)
 320±80gf Salmon(S)
 260±50gf Red(R)
 160±50gf Brown(N)
 100±50gf Black(K)

Stop Strength: Place the switch such that vertical, a static load of 3 kgf shall be applied in the direction of stem operation for a period Of 15 seconds.

Stroke : (12x12) 0.35±0.1mm
 (6x6) 0.25+0.2/-0.1mm

Operation Temperature Range : -25℃ to +70℃

Storage Temperature Range : -30℃ to +80℃

△ELECTRICAL (6X6)

Electrical Life : 300,000 cycles for 320gf,520gf
 500,000 cycles for 260gf
 1,000,000 cycles for 100gf,160gf

Rating : 50 Ma , 12 VDC

Contact Resistance : 100mΩ max

Insulation Resistance : 100MΩ min , 500 VDC

Dielectric Strength : 250 VAC / minute

Contact Arrangement : 1 pole 1 throw

MATERIAL

△COVER : Stainless steel

△CONTACT DISC : Phosphor bronze with silver cladding

△TERMINAL : Brass with silver plated

△BASE : UL94V-0 Nylon Thermoplastic

△STEM : UL94V-0 Nylon Thermoplastic

Color : Black(100gf) , Brown(160gf) , Red(260gf)

Salmon(320gf) , Yellow(520gf)

Silicon Rubber Color : Red (300gf) [DTS-21 Only]

CAP : Termoplastic ABS

△ELECTRICAL (12X12)

Electrical Life: 100,000 cycles for 320gf

100,000 cycles for 260gf

200,000 cycles for 160gf

SOLDERING PROCESS

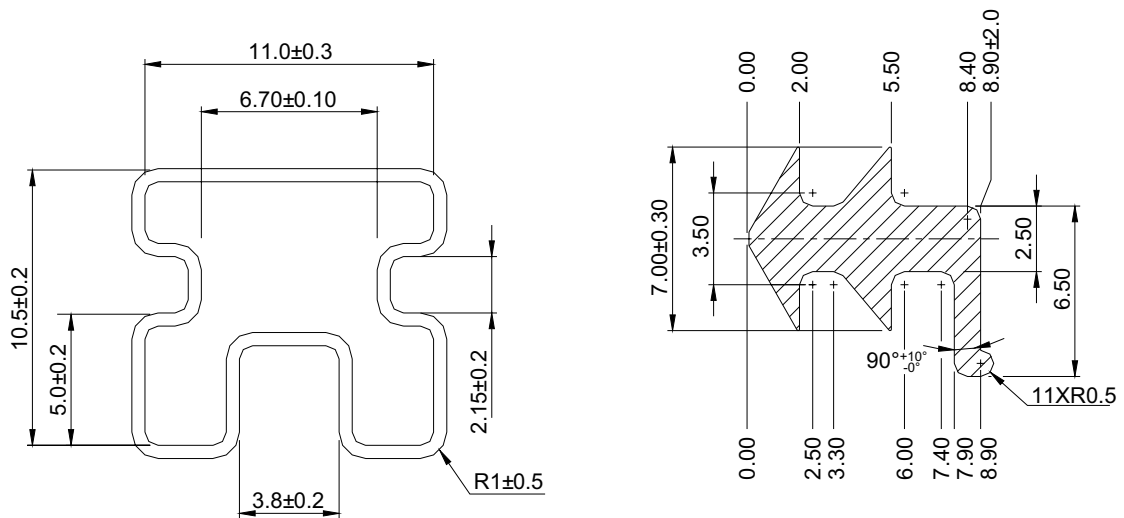
△WAVE SOLDERING: Recommended solder temperature at 500°F(260°C)max. 5 seconds subject to PBC 1.6mm thickness (For through hole type)

△Hand soldering : Use a soldering iron of 30 watts , controlled at 350°C approximately max 5 seconds while applying solder.

PACKING

Part Number	Number Per Bag	Number Per Tube
DTS-6□□□	1000	-
DTS-61	-	77
DTS-62	-	77
DTS-2	500	-
DTS-2□□	-	39

DTS-61.62 TUBE



DTS-2□□ TUBE

